



**SYARIF HIDAYATULLAH
STATE ISLAMIC UNIVERSITY OF JAKARTA**

PROFILE OF THE INDONESIAN LANGUAGE AND LITERATURE EDUCATION STUDY PROGRAM FACULTY OF EDUCATIONAL SCIENCES



Table of Contents

Preface
About Study Program in Indonesian Language and Literature Education
Vision and Mission
Organizational Structure
Educational Facilities
Competency of Academic Staff Members
Expertise Distribution Across Three Consortia: Learning, Literature, and Linguistics

Curriculum Structure

Learning Activity

Tracer Study

Achievement

Graduate Profile

Community Services

Preface

Dear Esteemed Readers,

We express our heartfelt gratitude to Allah Subhanahu Wa Ta'ala for His countless blessings, which have enabled us to present the Profile Book of the Indonesian Language and Literature Education Study Program at UIN Syarif Hidayatullah Jakarta. This program is not merely an academic unit; it serves as a platform for passionate learners committed to advancing the fields of education, language, and literature.

This book reflects our unwavering commitment and determination to develop the Indonesian Language and Literature Education Study Program into a center of academic excellence, research, and community service. We are on a significant journey towards an ambitious vision: to become an internationally recognized study program that integrates Islamic knowledge, humanitarian values, and Indonesian identity.

Within this book, you will find detailed information regarding our vision, mission, and strategic agenda, which includes laboratory development, accreditation enhancement, curriculum improvement, the roles of students and alumni, research and community service initiatives, modernization of facilities and infrastructure, and extensive collaborations. These are concrete steps we are undertaking to achieve high quality, international reputation, and sustainable development.

The support from stakeholders, including students, alumni, and various partners, is invaluable on this journey. We firmly believe that through synergy and collective awareness, we can achieve greater accomplishments and continue to create a positive legacy for the Indonesian Language and Literature Education Study Program and UIN Syarif Hidayatullah Jakarta. Let us work together to realize a brighter future for this program. Thank you for your support and cooperation.

Respectfully,
Ahmad Bahtiar



Dr. Ahmad Bahtiar, M.Hum.

*Chair of the Indonesian
Language and Literature
Education Study Program*



ABOUT STUDY PROGRAM IN INDONESIAN LANGUAGE AND LITERATURE EDUCATION

The Study Program in Indonesian Language and Literature Education was established due to a commitment to the preservation and development of Indonesia's cultural wealth. This program is designed to serve as an inspirational platform for students to understand, study, and teach the Indonesian language and literature in depth. The program adopts a holistic approach to equip students with knowledge of language structure, literary works, the history of the development of the Indonesian language, and innovative teaching techniques.

The objective of the Indonesian Language Education Study Program is to produce prospective educators, researchers, and other professionals in the field of Indonesian language and literature who possess pedagogical competence, personal competence, social competence, and professional competence, able to integrate the values of Islam, humanity, and Indonesianess.

The Indonesian Language and Literature Education Study Program (PBSI) adopts a student-centered learning approach through various methods, such as group discussions, role-playing simulations, discovery learning, self-directed learning, and group projects. In this program, faculty members serve a dual role as facilitators and mentors, supporting students in achieving learning objectives independently.

Assessment in the PBSI program is conducted formatively and summatively, focusing on learning outcomes and student competency mastery, involving self-reflection as well as constructive feedback provision.

In the evaluation process of the PBSI program, emphasis is placed on critical aspects related to the quality of education, the effectiveness of teaching methods, and the level of mastery of the material and competencies by the students. Assessment results encompass the level of student participation and engagement, the alignment of learning materials with the needs and developments of the students, as well as the attainment of learning objectives.



VISION AND MISSION

VISION

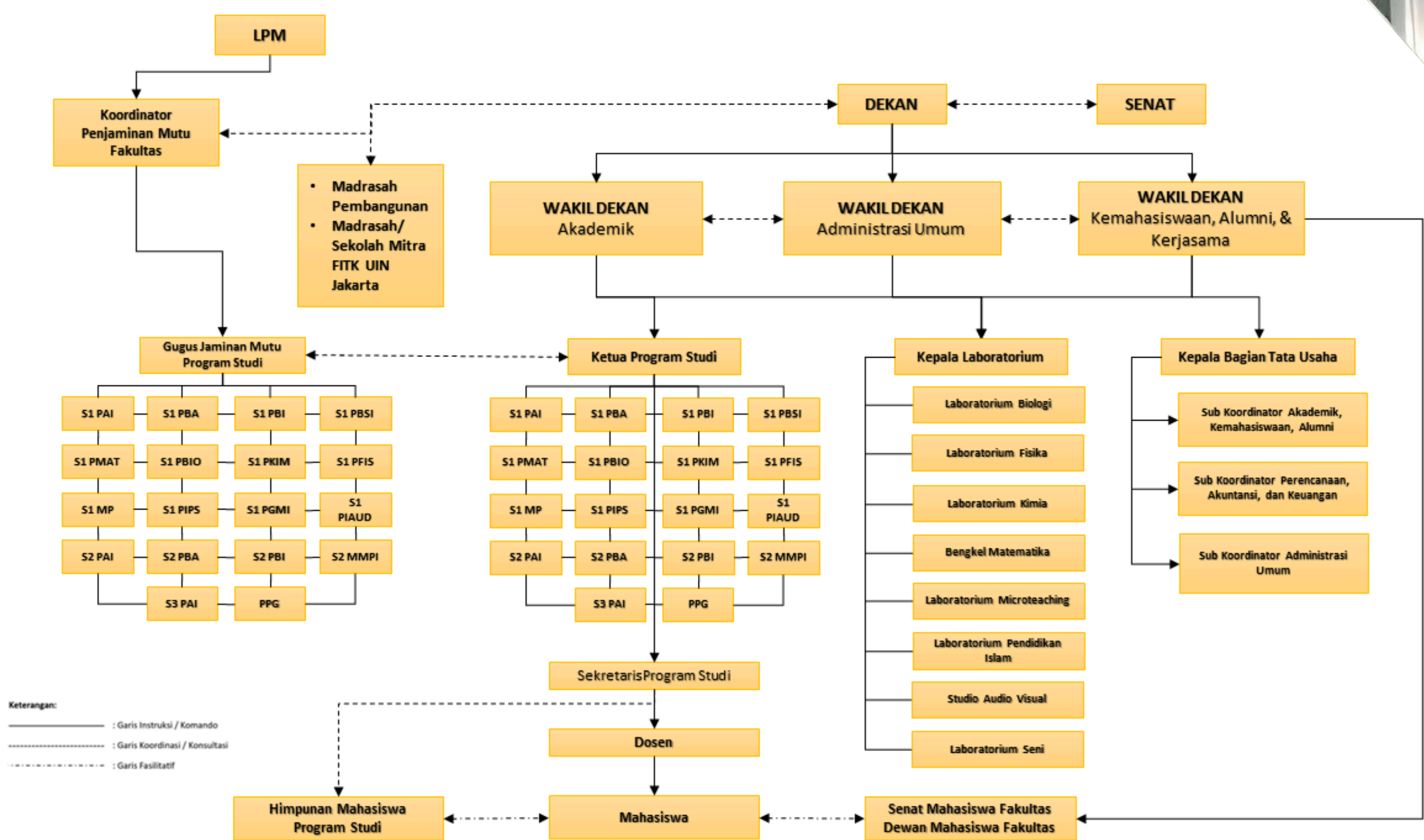
"To establish the Indonesian Language and Literature Education Study Program as a premier center for teacher education that exemplifies excellence, competitiveness, and professionalism at the national level, through the integration of scientific knowledge, Islamic values, and Indonesian identity."

MISSION

- To organize high-quality, research-based education and teaching aimed at enhancing the competencies and competitiveness of graduates.
- To conduct research and publish scientific works that develop models for integrating scientific knowledge with Islamic values in the field of education.
- To provide community service through integrated thematic programs that offer solutions to educational and social needs.
- To develop effective networks and partnerships at both national and international levels.
- To implement professional governance within the Indonesian Language and Literature Education Study Program, ensuring the delivery of exceptional services.
- To become a Center of Teacher Education that is excellent, competitive, and professional at the Southeast Asian level, by integrating scientific knowledge, Islamic values, and Indonesian identity.



ORGANIZATIONAL STRUCTURE



EDUCATIONAL FACILITIES



Mosque

A spacious and serene prayer area designed to accommodate students, faculty, and staff for daily prayers, providing a tranquil environment for spiritual reflection and community bonding.

Student Centre

A multi-functional hall for hosting student-led events, workshops, seminars, and extracurricular activities. This space allows students to organize and participate in various events that contribute to their personal and professional development.



Building A

Building A serves as a central hub for academic and administrative activities, featuring classrooms designed for lectures and interactive learning sessions, offices for both faculty and department staff, and a dedicated theater room for larger events such as seminars, presentations, and performances. This multi-functional building supports both the educational and organizational needs, providing a dynamic environment for learning, administration, and community engagement.



Building B

Building B is a key facility that accommodates classrooms for learning, departmental offices, and a spacious hall for events and gatherings. It also serves as an important venue for teacher education exams, providing a well-equipped and organized space that supports both academic and administrative functions. This building plays a vital role in fostering an effective and professional environment for student learning and faculty operations.

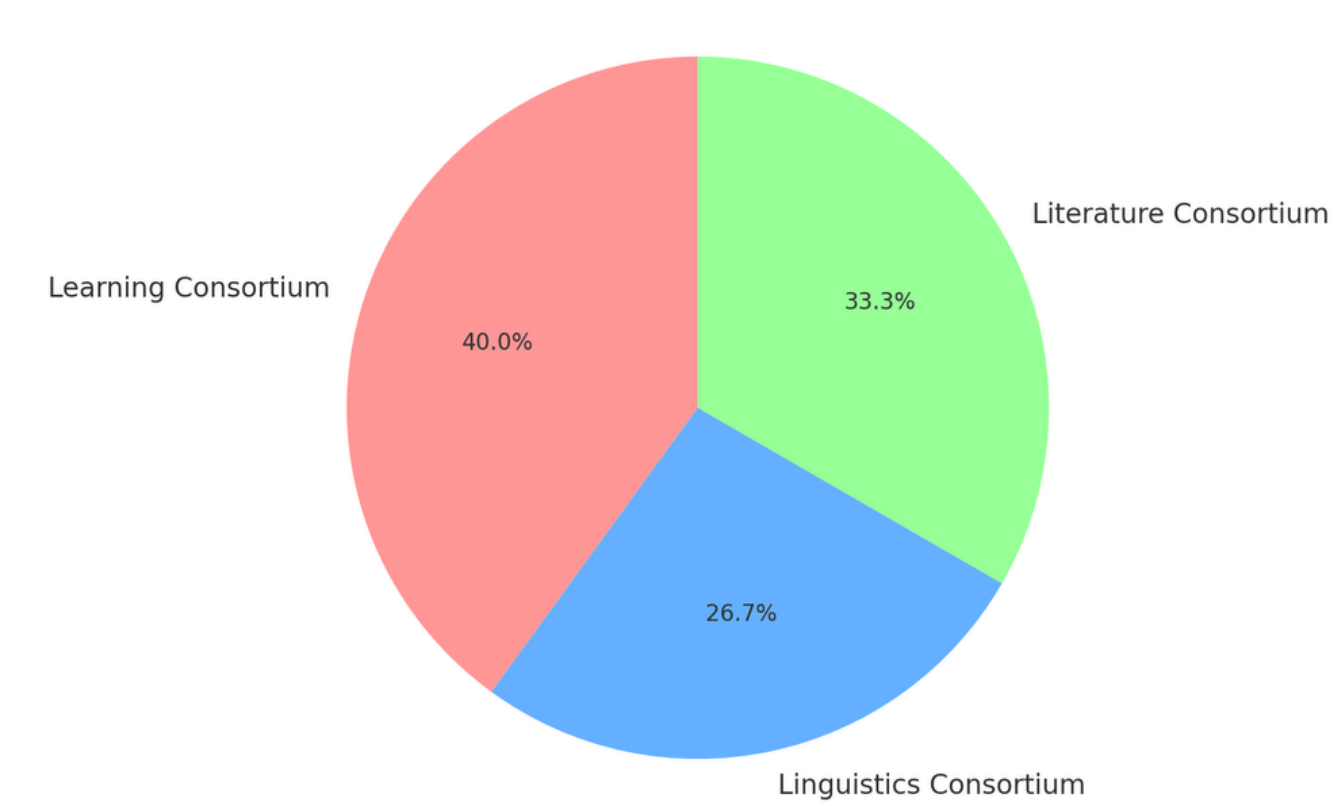


COMPETENCY OF ACADEMIC STAFF MEMBERS

No	NIDN	Name	Academic Rank	Field of Study	Expertise	Degree Order
1	2028068201	Dr. Nuryani, S.Pd, M.A.	Associate Professor	Linguistics	Applied Linguistics	Doctor
2	2001086802	Dr. Elvi Susanti, M.Pd.	Associate Professor	Indonesian Language and Literature Education	Language Learning	Doctor
3	2005128001	Dr. Makyun Subuki, M.Hum.	Associate Professor	Linguistics	Discourse Analysis, Forensic Linguistics	Doctor
4	2015127001	Dr. Hindun, M.Pd.	Assistant Professor	Indonesian Language and Literature Education	Language Learning	Doctor
5	2018017602	Dr. Ahmad Bahtiar, M.Hum	Assistant Professor	Indonesian Language and Literature Education	Literary History, Indonesian Language, Language and Literature Learning	Doctor
6	2009048401	Dr. Dona Aji Karunia Putra, MA.	Assistant Professor	Indonesian Language (and Literature) Education	Micro Linguistics	Doctor
7	301128002	Dr. Mohammad Siddiq, M.Si., M.Pd	Assistant Professor	Indonesian Language (and Literature) Education	Educational Linguistics and Educational Ethnography	Doctor
8	2012026401	Dra. Mahmudah Fitriyah ZA., M.Pd.	Assistant Professor	Indonesian Language and Literature Education	Indonesian Language	Master
9	2026118602	Novi Diah Haryanti, M.Hum.	Assistant Professor	General Literary Studies	Literary Criticism, Pesantren Literature	Master
10	2121108301	Nur Syamsiyah, M.Pd.	Assistant Professor	Indonesian Language Education	Language Learning	Master
11	2030107703	Rosida Erowati, M.Hum.	Assistant Professor	General Literary Studies	Literary Criticism, Indonesian Language for Foreign Speakers	Master
12	2024099203	Indah Fadhilla, S.S., M.Hum.	Assistant Professor	General Literary Studies	Literary Theory, Interdisciplinary Literary Theory, Literary Appreciation and Expression	Master
13	9058602	Yang Yang Merdiyatna, M.Pd.	Assistant Professor	Indonesian Language (and Literature) Education	Literary Appreciation, Oral Literature	Master
14	2013039401	Atiqotul Fitriyah, M.Hum.	Assistant Professor	Indonesian Language (and Literature) Education	Oral Tradition, Literature Studies, Indonesian Language	Master
15	9920112847	Neneng Nurjanah, M.Hum.	Assistant Professor	General Linguistics	Indonesian Language, Microlinguistics, and Corpus Linguistics	Master

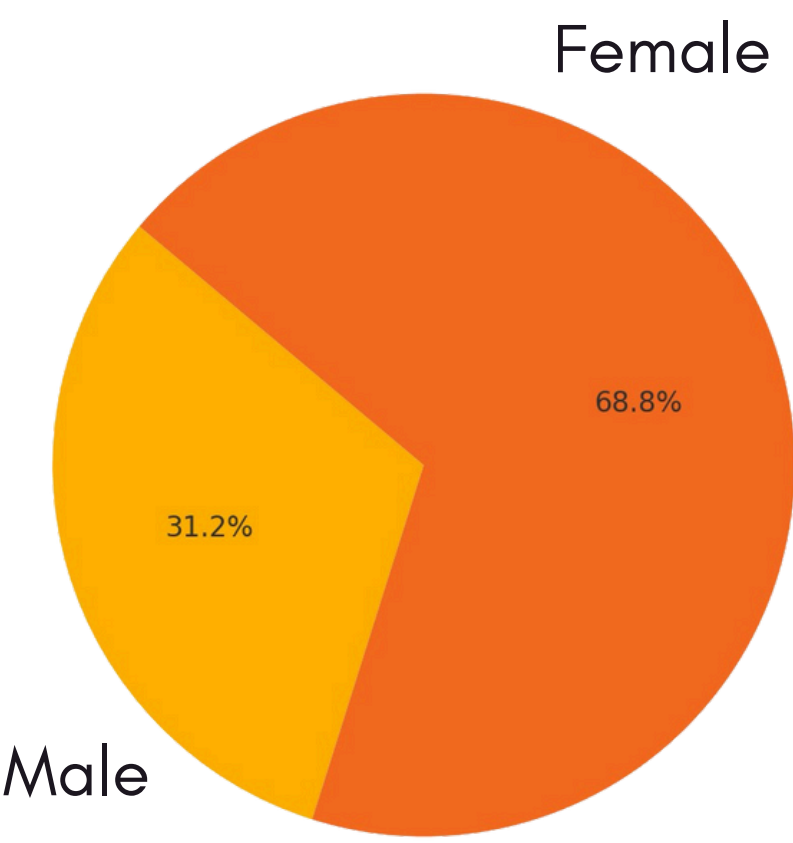
EXPERTISE DISTRIBUTION ACROSS THREE CONSORTIA: LEARNING, LITERATURE, AND LINGUISTICS

The Indonesian Language and Literature Education Study Program comprises three distinct consortia that reflect the diverse fields of study encompassed within its curriculum and research initiatives. These consortia—Learning, Literature, and Linguistics—serve as a framework for the program, guiding both academic exploration and research activities.



Each consortium embodies specific areas of expertise, fostering a comprehensive educational experience that prepares students to excel in their respective fields while promoting interdisciplinary collaboration.

In the Indonesian Language and Literature education program, there is a notable gender disparity among lecturers, with males comprising only 31.25% of the total, while females represent a significant majority at 68.75%. This imbalance highlights a trend where female lecturer dominate the program, suggesting potential influences of societal norms and interests in the field of language and literature education.



CURRICULUM STRUCTURE

SEMESTER	COURSE STRUCTURE OF THE INDONESIAN LANGUAGE AND LITERATURE EDUCATION STUDY PROGRAMME									TOTAL CREDITS	* Manuscript Editing Public Speaking Linguistik Forensik Linguistic Anthropology Folklor Comparative Historical Linguistics Semiotic
VIII	Thesis	PLP 1	PLP 2							9	
	6	1	2								
VII	Community Service Program (KKN)	Seminar Proposal for Research on Indonesian Language and Literature Education	Microteaching	Elective Courses*						9	
	2	0	3	4							
VI	Educational Management	Indonesian Language and Literature Learning Research Methodology	Language Research Methodology	Literature Research Methodology	Planning for Indonesian Language Learning	Rhetoric		Discourse Analysis	Drama Practicum	18	
	2	2	2	2	2	2		3	3		
V	Education Statistics	Indonesian Language and Literature Learning Media	Evaluation of Indonesian Language and Literature Learning	BIPA Learning	Pragmatics	Psycholinguistics		Drama Studies 1	Comparative Literature	21	
	3	3	2	3	2	3		2	3		
IV	Indonesian Language Curriculum and Textbook Analysis	Indonesian Language and Literature Learning Strategies	Writing Learning	Language Error Analysis	Semantics	Sociolinguistics		Prose Studies	Poetry Studies	22	
	2	2	3	3	3	3		3	3		
III	Moral Education	Worship and Recitation Practicum	Education Psychology	Curriculum and Learning of Indonesian Language and Literature	Reading Learning	Syntax		Literary Theory Interdisciplinary	Literary Appreciation and Expression	23	
	3	2	3	2	4	3		3	3		
II	Arabic Language	Philosophy and Educational Science	Speaking Learning	Phonology	Morpology	Modern Indonesia Literature History		Literary Theory		20	
	3	2	4	3	3	2		3			
I	Indonesia Language	English Language	Pancasila and Civic Education	Islamic Education Science	Islamic Studies	Listening Learning		General Linguistic	Malay Literature History	22	
	3	3	3	2	4	2		3	2		
										144	

	Compulsory University Courses
	Compulsory Faculty Courses
	Compulsory Study Programme Courses
	Core Courses of the Study Programme
	Elective Courses

LEARNING ACTIVITIES



INTERNATIONAL FORUM

The international forum organized by PBSI was themed the International Peace Education Seminar and took place on Wednesday, July 20, 2022, at the Harun Nasution Auditorium. To promote the mission of world peace, UIN Jakarta continues to support the Indonesian government in its diplomatic initiatives at both regional and international levels.

The event presented the main speaker, namely the President of the Democratic Republic of Timor Leste, José Ramos Horta, who is also the winner of the 1996 Nobel Peace Prize. In addition, a number of speakers were present, including Prof. Dr. H. Azyumardi Azra, M.Phil., M.A.,C.B.E., Prof. Amelia Fauziah, M.A., Ph.D., and Dr. Arif Abdullah Sagran, M.Si.

INTERNATIONAL WORKSHOP

The importance of international workshops at the Indonesian Language and Literature Education program (PBSI) at UIN Jakarta cannot be overstated, as they serve as vital platforms for academic exchange, skill enhancement, and networking among students and professionals from various backgrounds. These workshops provide participants with exposure to global perspectives in language education and literature, fostering a deeper understanding of contemporary issues and innovative teaching methodologies. One notable event was the international workshop conducted by Ian Buchanan, a distinguished scholar from the University of Wollongong, Australia.



PESTARAMA

Pekanan Apresiasi Sastra dan Drama (Pestarama) at the Indonesian Language and Literature Education program (PBSI) of UIN Jakarta is an annual event that celebrates literary and dramatic arts, fostering creativity and cultural appreciation among students. This year, Pestarama marked its ninth iteration, featuring various activities including guest lectures, seminars, and theatrical performances. One of the highlights was a guest lecture and national seminar that focused on the role of Islamic cultural institutions in shaping literature and drama in Indonesia.





INTERNAL WORKSHOP

The internal workshops at the Indonesian Language and Literature Education program (PBSI) at UIN Jakarta are pivotal in enhancing the academic and professional development of students and faculty alike. Recent activities include the Workshop on Self-Expression Through Literary Works, which encourages creativity in literary forms; a Curriculum Workshop aimed at refining the PBSI curriculum to align with current educational trends; and a Training on Scientific and Popular Articles that equips participants with writing and publication strategies.

JULID (JUM'AT LITERASI DOSEN)

Jumat Literasi Dosen (JULID) is a regular event organized by the faculty members of the Indonesian Language and Literature Education program (PBSI) at UIN Jakarta, held every Friday. This initiative aims to foster a culture of literacy and academic discussion among faculty members, focusing on various fields related to Indonesian language education. During these sessions, participants engage in discussions that cover a wide range of topics, including recent developments in language education, innovative teaching methodologies, and the integration of technology in the classroom.



PUBLIC LECTURE

The hospital on campus serves as a vital facility, providing comprehensive healthcare services to students, staff, and the surrounding community. Equipped with modern medical equipment and staffed by professional healthcare providers, the hospital offers a range of services including outpatient care, emergency treatment, and specialized medical consultations.



FESTIVAL PKN (NATIONAL CULTURAL WEEK)

The Pekan Kebudayaan Nasional (PKN) organized by the Indonesian Language and Literature Education program (PBSI) at UIN Jakarta is a significant cultural event aimed at celebrating and promoting Indonesia's rich cultural heritage. This year's PKN, held from October 20 to 28, 2023, featured a variety of activities under the theme "Resonansi Budaya Islam: Dari Ciputat untuk Dunia". Highlights included a workshop on stand-up comedy, a tribute to local cultural figures, and monologue performances by renowned artists like Putu Wijaya. Additionally, the event showcased the "Pojoek Danarto," a literacy corner dedicated to the works of the esteemed Indonesian author Danarto.

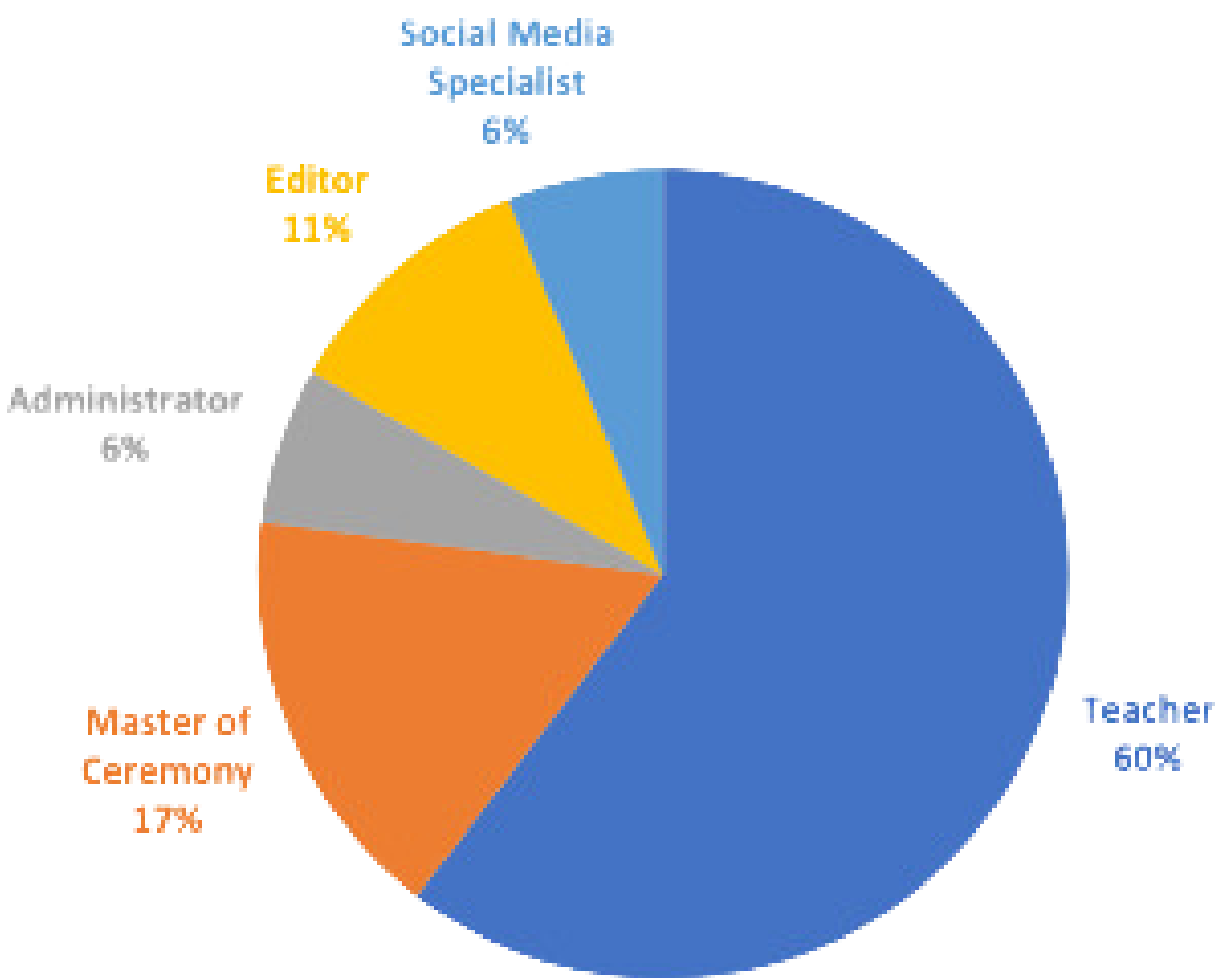
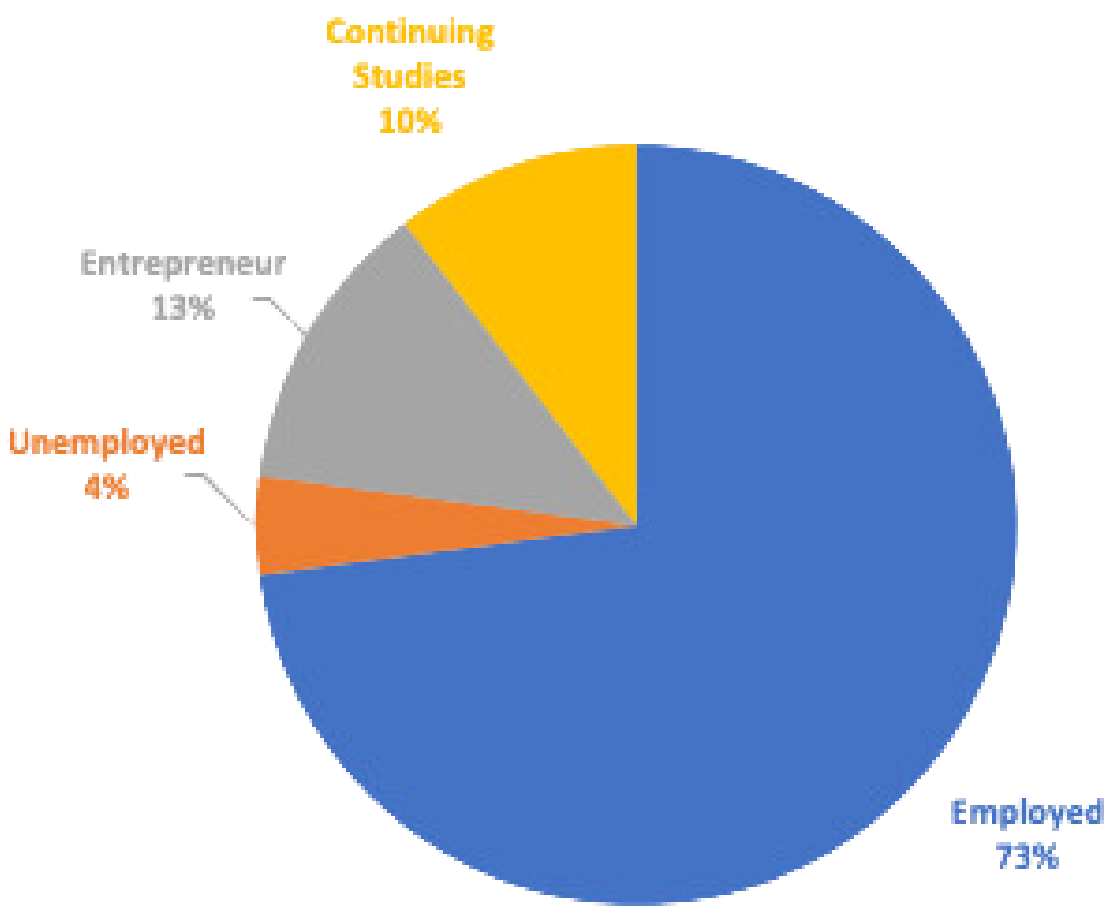
STADIUM GENERALE

The Indonesian Language and Literature Education program (PBSI) at UIN Jakarta hosts a variety of enriching Stadium Generale events aimed at fostering intellectual engagement and cultural appreciation among students and faculty. Notable activities include the "K-Pop and Youth Culture" seminar on September 12, 2024. Another significant event is the seminar on "Philological Studies in Education" scheduled for October 25, 2024, where scholars analyze the integration of philological principles into educational practices to enhance literary understanding.



TRACER STUDIES

The student data from PBSI (Program Studi Bahasa dan Sastra Indonesia) reveals a comprehensive overview of the employment outcomes for its graduates. Out of a total of 48 graduates, approximately 73% are employed, which translates to about 48 students actively working in various fields. 10% of them are continuing their studio into master studies, 13 % have decided to be an entrepreneur, while 4% are still unemployed because of undesirable opportunity.



Among these employed graduates, a significant majority, approximately 60%, have secured positions as teachers, indicating a strong alignment between the program's curriculum and the job market's demand for educators. Additionally, around 17% of graduates work as Master of Ceremonies, while 6% hold administrative roles, and 11% are employed as editors. The data also highlights that 4% of the graduates are unemployed, which represents about five individuals seeking job opportunities. Furthermore, 13% have ventured into entrepreneurship, showcasing their initiative to create their own businesses, and another 10% are continuing their studies to enhance their qualifications further.

This distribution illustrates not only the effectiveness of the PBSI program in preparing students for teaching roles but also reflects the diverse career paths that graduates pursue post-graduation. Overall, the employment statistics suggest a positive outcome for PBSI graduates, with a majority finding relevant employment and others exploring entrepreneurial ventures or further academic pursuits.

ACHIEVEMENT

Students in the Indonesian Language and Literature Education program at FITK UIN Jakarta are not only equipped with solid academic skills in education, language, linguistics, culture, and Indonesian literature, but they also excel in extracurricular activities. Their proactive involvement in competitions and volunteer work showcases their dedication and passion. This vibrant engagement elevates the reputation of PBSI UIN Jakarta, making it a source of pride in both national and international arenas.



LANGUAGE AMBASSADOR

Language ambassadors represent the vibrant youth dedicated to the advancement of the Indonesian language and the preservation of regional languages. With their proficiency in foreign languages, they play a crucial role in elevating the status of the Indonesian language on the global stage, ensuring its relevance and influence in an increasingly interconnected world. Several PBSI students became finalists and runners-up in the language ambassador activity: Rian Dwiwanto, Eling Arliyan, Nayla Autar, Uliyana Hidayatika, Hesti, Bulqaini, and Fathma Cita Zunurahma.

GENRE AMBASSADOR

The Ambassador of the Planning Generation (Genre) serves as a role model for teenagers and young adults, showcasing the knowledge and behaviors needed for a fulfilling family life. By promoting healthy choices and discouraging the Triad KRR risksearly marriage, drug abuse, and promiscuity—this role inspires youth to make informed decisions for a better future. Several PBSI students became finalists and runners-up in the language ambassador activity: Rian Dwiwanto, Uliyana Hidayatika, and Bulqaini.



EDUPRENEUR COMPETITION

Students from the Indonesian Language and Literature Education program at UIN Jakarta have actively participated in various edupreneur competitions, both on and off campus, showcasing their innovative spirit and entrepreneurial skills. Recently, they successfully developed a journal management service that not only streamlines the publication process but also enhances academic collaboration among students and faculty. Their project stood out in the competition, earning them recognition for its practicality and potential impact on the academic community.

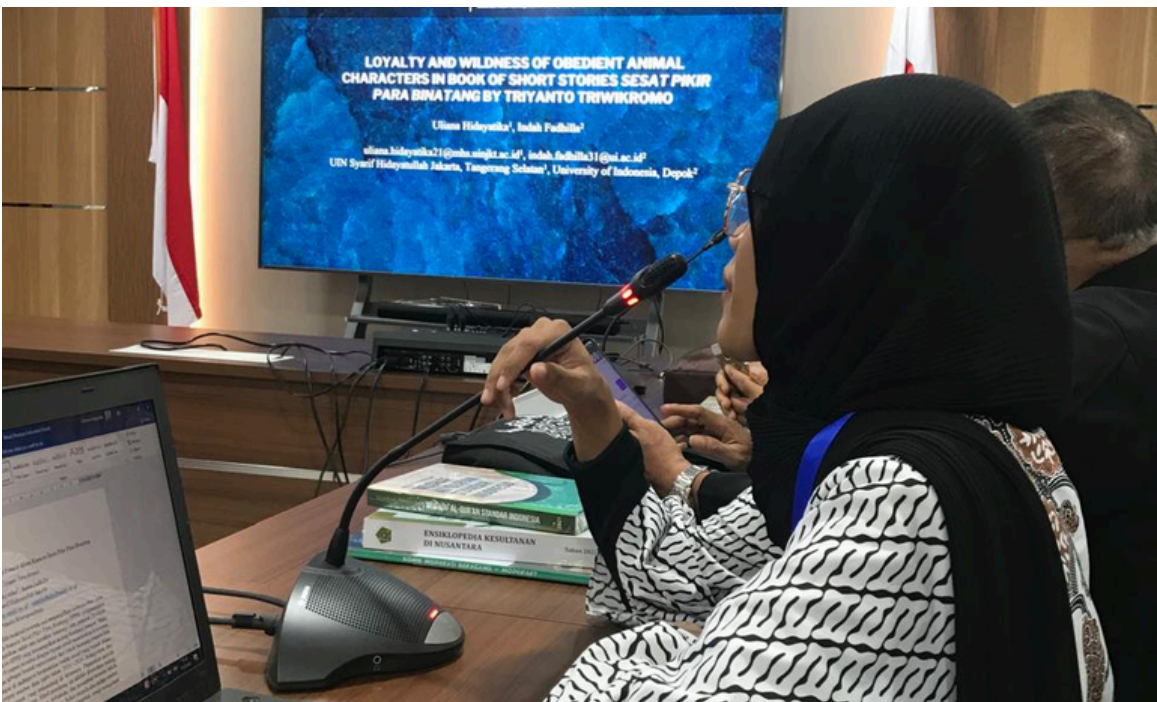
MASTER OF CEREMONY AND SPEECH CONTEST

A speech contest that empowers individuals to master the art of public speaking and fosters the self-confidence needed to shine in front of an audience. A speech contest that empowers individuals to master the art of public speaking and fosters the self-confidence needed to shine in front of an audience.



WRITING CONTEST

Indonesian Language and Literature Education students have incredible opportunities to shine in writing competitions hosted by various institutions. They have excelled as Best Writers and Selected Authors in prestigious novel and poetry contests. Their talents extend beyond writing, as they have also been recognized as outstanding speakers and writers in scientific presentations. Furthermore, many of these remarkable students have published their own collections of poetry, short stories, and novels, showcasing their creativity and dedication to the craft.



CONTENT CREATOR CONTEST

Students in the Indonesian Language and Literature Education study program have demonstrated their creative talents by excelling in various writing competitions, particularly in the Creator Content Competition, which includes the Creative Video Competition. This event highlights the participants' skills in producing engaging video content and effectively communicating their ideas and narratives. Some PBSI students won the Creative Content Video Competition during the 2022 National Sports Week.



SPORTS CONTEST

Students from the Indonesian Language and Literature Education program at UIN Jakarta have showcased their exceptional athletic abilities by participating in various sports competitions, notably excelling in taekwondo and table tennis. Their remarkable performances have not only earned them championships but also brought pride to UIN Jakarta on the national stage.



GRADUATE PROFILE



EDUCATOR IN THE FIELD OF INDONESIAN LANGUAGE AND LITERATURE

Graduates of Indonesian Language and Literature Education have a variety of exciting career opportunities due to the linguistic skills and deep understanding of Indonesian culture and literature they gain during their studies. One common career path for these graduates is to become educators. They can teach in junior high schools (SMP) and senior high schools (SMA), and they may also work as teachers for the Indonesian language for speakers of other languages (BIPA).

RESEARCHER IN THE FIELD OF INDONESIAN LANGUAGE AND LITERATURE

Graduates of Indonesian Language and Literature Education have a wide range of exciting career opportunities due to the linguistic skills and comprehensive understanding of Indonesian culture and literature that they gain during their studies. Many graduates also have the chance to enter the field of research. Some choose to focus on research related to language and literature, working in research institutions or universities where they can contribute to knowledge development and conduct in-depth studies on various aspects of the Indonesian language and literature.



PRACTITIONERS IN THE FIELD OF INDONESIAN LANGUAGE AND LITERATURE

Graduates of Indonesian Language and Literature Education possess a strong educational background that gives them a competitive edge in various industries requiring effective communication skills. This profession is especially appealing due to the opportunity for graduates to contribute to cultural and educational development. Additionally, they can pursue entrepreneurial ventures by opening language courses or publishing their own literary works. Through creativity and innovation, these graduates can establish businesses that are not only profitable but also beneficial to society.

COMMUNITY SERVICES



‘GRIYA BERSAMA’

The community service activities conducted by students of the Indonesian Language Education Study Program (PBSI) in marginalized urban areas focus on enhancing literacy through engaging methods such as storytelling, reading, and building self-confidence for public speaking. These initiatives aim to empower local communities by organizing storytelling sessions where students share traditional tales, fostering a love for literature among children and encouraging them to express themselves creatively. Additionally, the program includes reading sessions that not only improve literacy skills but also help participants articulate their thoughts effectively. By providing training in public speaking, the students help participants gain confidence in their ability to communicate in front of an audience, thus promoting both personal development and community engagement in literacy activities

ALIENATED COMMUNITY SERVICE

The community service program (PKM) conducted by the Indonesian Language Education Study Program (PBSI) at a pesantren focuses on teaching the importance of developing language skills through counseling and practical applications. This initiative aims to enhance the linguistic capabilities of the santri (students) by providing them with essential tools and methodologies for effective communication. The program includes workshops that not only emphasize theoretical knowledge but also engage students in hands-on activities, allowing them to practice their language skills in real-life contexts. By fostering these skills, the program seeks to prepare santri for future challenges in both academic and professional environments, highlighting the critical role of language proficiency in personal and community development.



LITERACY EMPOWERMENT

The community service activities carried out by students of the Indonesian Language Education Study Program (PBSI) focus on literacy empowerment in underserved urban areas. These initiatives include engaging activities such as storytelling, reading sessions, and public speaking training aimed at enhancing literacy and communication skills among community members. For instance, the "Bhumi Literacy" program aims to address educational decline by developing children's literacy through non-formal education, incorporating various sub-programs like scientific and cultural literacy

RURAL VOLUNTEERS

Community service initiatives by students in rural areas focus on entrepreneurship in the fields of language and literature, particularly through public speaking and master of ceremony training. These programs aim to empower local residents by enhancing their communication skills, which are essential for effective engagement in various entrepreneurial activities. Through workshops, students teach participants the art of public speaking, enabling them to present their ideas confidently and effectively.

